



FRAYED KNOT THEATRE COMPANY PRESENTS



Farndale Avenue Housing Estate Town's Women Guild Dramatic Society's Production Of.....

Macbeth . . A COMEDY

BY DAVID MCGILLIVRAY & WALTER ZERLIN Jr.

IN ASSOCIATION WITH SAMUEL FRENCH
SPONSORED BY MATTHEW HOMES LTD
and SUPPORTED BY DACORUM BOROUGH COUNCIL.



Matthew Homes Limited



CURRENT AVAILABILITY

APRIL 1996

Abbots Green, ABBOTS LANGLEY , Herts	2, 3 & 4 bedroom homes from £59,995 <i>SHOWHOME OPEN 10 am - 5 pm daily, (01923) 680915</i>
Clayton Fields, Hammonds Ridge BURGESS HILL , West Sussex	3 & 4 bedroom houses from £91,995 <i>SHOW HOME OPEN 10 am - 5 pm daily, (01444) 871041</i>
Stebbing Road, FELSTED , Essex.	5 bedroom houses to be released <i>For details contact (01707) 655550</i>
Ashford Road, HARRIETSHAM , Kent	3 & 4 bedroom houses to be released <i>For details contact (01707) 655550</i>
Callford Park, Chalkstone Way HAVERINGHILL , Suffolk	2, 3 & 4 bedroom houses from £41,495 <i>SHOW HOME OPEN 10 am - 5 pm daily, (01440) 714503</i>
Suffolk Heights, Chalkstone Way HAVERINGHILL , Suffolk	3 & 4 bedroom houses from £57,500 <i>SHOW HOME OPEN 10am - 5pm daily, (01440) 710310</i>
Pastures Mead, Hercies Road HILLINGDON , Middx	4 bedroom houses - £159,995 <i>For details contact (01895) 236241</i>
Ashdown Court, Oak Tree Way HORSHAM , West Sussex	2 bed apartments from £59,995 <i>For details contact ALLIANCE & LEICESTER (01403) 272222</i>
Lincewood Gardens, Nightingales LANGDON HILLS , Essex.	4 bedroom houses from £104,995 <i>SHOW HOME OPEN 10am - 5pm daily, (01268) 410284</i>
Shenley Rise, Shenley Church End MILTON KEYNES , Bucks	5 bedroom detached houses from £149,995 <i>SHOW HOME OPEN 10am - 5pm Sat - Sun, (01908) 505985</i>
Florence Court, Alma Road ST ALBANS , Herts.	1 & 2 bedroom Apartments from £59,995 <i>For details contact AITCHISSIONS (01727) 843232</i>
Chancellors Road STEVENAGE , Herts.	4 & 5 bedroom houses to be released <i>For details contact (01707) 655550</i>
Ely Gardens, TONBRIDGE , Kent	Five bedroom detached houses from £214,995 <i>SHOW HOME OPEN 10 am - 5 pm Sat & Sun, (01732) 355205</i>
Ridgewood Vale, UCKFIELD , East Sussex	3 & 4 bedroom houses from £92,995 <i>SHOW HOME OPEN 10 am - 5 pm daily, (01825) 760799</i>

For further details contact on-site sales centres or Matthew Homes Ltd, Matthew House, 45-47 High Street, Potters Bar, Herts. EN6 5AW. Tel: (01707) 655550

Prices & Opening Times correct at time of publication. Please check before travelling.

Patrons - Frayed Knot

We have seen your faces before, honouring us with your presence at our productions; without you, "Frayed Knot" would not have the incentive to produce plays and revues to entertain you.

Now we are going one step further. Due to the enquiring public and by suggestions made by you, we are launching a Patrons Society; this Society will be affiliated to the "Frayed Knot Theatre Company" and for an annual membership fee you will be at liberty to drop in at any of our "invitation" rehearsals, enter into the fun of fund-raising, should you so desire, and obtain a free ticket for any two of our three shows being put on throughout the year, where you have reserved places in the best seats in the house.

A quarterly News Letter will be put out to you giving details of our activities and advising you of events that may interest you.

If you would like to become a Patron of "Frayed Knot" please fill in the enclosed form, and send it with your cheque to Mrs. Joan Double, Patron Secretary, "Frayed Knot", The Leas, Buckland, Aylesbury, Bucks. HP22 5HY (tel: 01296 630174) or pass to any member of "Frayed Knot" whom you may know.

We trust you will have a happy time with us.

Single Membership £15.00 per annum

Family Membership £40.00 per annum

Johann Meadows

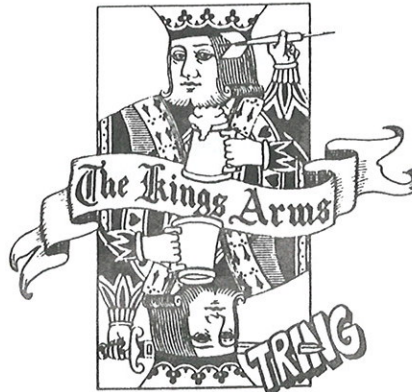
General Builder

Extensions & Conversions,
Renovations & Decorating,
Roofing a speciality.

(in addition to set building!)

Call 0374-889365 for a no-obligation estimate.

**For a Good Pint
after the Show . . .**



AUTHENTEC

When your data matters!

Data Recovery Services
Consultancy Services
Computer Forensics & Investigation

AuthenTec International Ltd.

Formerly known as

Dr Solomon's Data Recovery Service

Alton House, Gatehouse Way, Aylesbury, Bucks HP19 3XU

Telephone 01296-318813

Facsimile 01296-318814

FRAYED KNOT THEATRE COMPANY

A Brief History

Frayed Knot Theatre Company was established in 1991 and is therefore now in its fifth year. The Tring area is remarkably well endowed with Amateur Dramatic societies and the nascent Frayed Knot had to work hard to establish itself. As we were an unknown company with very little working capital, customary wisdom may have suggested that our best course of action was to perform a very well-known play to attract the largest possible audience - 'fraid not ! The at-that-time unnamed Frayed Knot performed **Marreau and the Chocolate Policeman** an unknown play by an unknown author - with the help of Phoenix Theatre Company. The first performance being at Marsworth Village Hall, to an audience of about fifteen. The play was well received and the cast enjoyed performing it and so it was decided that the sequel, **African Moon** would be the next production. Frayed Knot produced this in Spring 1992 as the company's first solo venture. 1993 was an important year for the company, firstly because we performed two shows in the year, secondly because we performed our first "Course Acting" play, **Moby Dick**, and thirdly because we were able to put the show on at Pendley, something which would have been financially unthinkable a couple of years before. In 1994, as well as the now customary Marreau, we staged our first well-known play **Blithe Spirit**. Last year saw the fifth of the Marreau sequence and our first melodrama, **Sweeney Todd, the barber**. 1996 promises to be another crucial year for the company, as we are performing three productions; this current production of the **Farndale Macbeth**; the sixth - and probably final **Marreau** and a comedy entitled "**Party Piece**". The company is continuing to grow steadily, along I am pleased to say with our audience figures which have increased with every show.

I hope you will become one of our regular viewers and enjoy tonight's and all our future shows.

Rob Farrow, Chairman.

Our Next Production

MARREAU

and the

Clouds of Death

FRAYED KNOT THEATRE COMPANY

presents

The Farndale Avenue Housing Estate Townswomen's Guild Dramatic Society's production of

Macbeth

A Comedy by

David McGillivray and Walter Zerlin Jnr.

Previous Productions

1991

Marreau and the Chocolate Policeman
(A co-production with Phoenix Theatre Company)

1992

Marreau and the African Moon

1993

Marreau and the Curse of Cardiff
D.F.C. / Moby Dick : Double Bill

1994

Marreau and the Bloody Carpet
Blithe Spirit

1995

Marreau and the Sword of Carthage
Sweeney Todd, The Demon Barber

Forthcoming Productions

1996

4th - 7th September : **Marreau and the Clouds of Death**
27th - 30th November : **Party Piece**

All at The Court Theatre, Pendley.

Farndale ... Macbeth by McGillivray and Zerlin

Directed by Colin Bryer

The Cast

George Peach	An adjudicator	Ken Hayes
Mrs. Reece	Lady Macduff, Doctor	Jenny Booth
Thelma	Macbeth, Ross	Jacquie Hildreth
Henry	Lady Macbeth, 8 kings	Mike Sane
Minnie	Banquo, Lady Macduff's Son	Vi Malcolm
Plummer	The producer	Rob Farrow
Dawn	1st Witch, Porter, 2nd Murderer, Duncan, Fleance	Jan Jones
Felicity	2nd Witch, Seyton, 1st Murderer, Malcolm, Gentlewoman	Regina Dobbs
Kate	3rd Witch, Macduff, Messenger	Lynda Hunt
Gwynneth	Pianist	Julie Stanley

Acts & Scenes

Introduction
Act I Scene 1 : A heath near Forres
Scenes 2 - 7 : In and around Dunsinane
Intermission
The raffle will be drawn
Act II Scene 1 : Dunsinane
Scenes 2 and 3 : On the heath
Scene 4 : At home with the Macduffs
Scene 5 : Near Forres
Scene 6 : Dunsinane
Scene 7 : Birnam Wood
Scene 8 : Dunsinane
Mr. Peach's summing up

Farndale ... Macbeth by McGillivray and Zerlin

For the production

<i>Stage Manager</i>	Johann Meadows
<i>Lighting</i>	Jeff Yates
<i>Pirotechnics</i>	Dennis Granvel
<i>Props.</i>	Sue Fuchter
<i>Costume</i>	Maria Cook
<i>Costume Assistant</i>	Iris Colley
<i>Make-up</i>	Sue Hyde & Friends
<i>Front-of-House Manager</i>	Colin Hunt
<i>Stage Crew</i>	Graham Double
	Stephen Gilson
	David Welling
	Jolyon Jago
	Timo Keeley
<i>Programme production</i>	Rob Farrow
<i>Sound Effects</i>	Norman Ward

A Frayed Knot Theatre Company Production

In association with Samuel French Ltd.

Sponsored by Matthew Homes Ltd.

and supported by Dacorum Borough Council via Tring Arts Trust

For lovely home-made jams, pickles
and preserves :

Come to

Mrs. Dabney's Stall

The market
Every Friday
Without fail

Ask about my home-made wine

Good Luck with your show !

from

The Farndale Avenue
Brass-rubbing society

"May Farndale Flourish"

Farndale Avenue

Housing Estate

Womans' Guild
dramatic society

proudly present

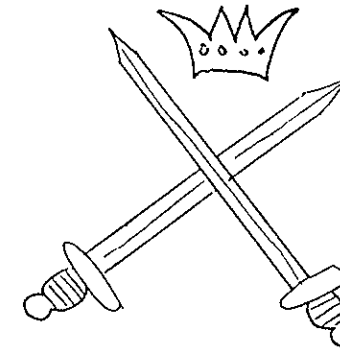
Macbeth

by William Shakespeare

directed by
David Plummer

In the presence of
our special guest, Mr. George Grape.
Adjudicator for The N.A.T.G.D.S.

"Floreat Farndale"
(May Farndale flourish)



Camelot Theatre Forthcoming Events

July 1996 for five weeks

Farndale Avenue & Brookman Drive Over 60's Theatre Group
present : The Romans in Britain

September 12th 1996 for one night only

Farndale Avenue Young Buddhists Drama Association
present : Goethe's Faust (uncut)
{please note this performance is in German}

December 19th - January 15th

Christmas Pantomime

Details still to be announced but it will either be :
"Mother Goose" or "Les Miserables"
Watch this space

Slowcome & Smiles Funeral Directors
"Don't leave it till it's too late"

For service with a Smiles : 27 High St., Farndale

OUR CAST

Macbeth Thelma Fotherington
Lady Macbeth Hilda Bristow

Banquo Minnie Major

First Witch Dawn Day
Second Witch Felicity Lightfoot
Third Witch Kate Parry-Jones
Lady Macduff Phoebe Reece

Ross Thelma Fotherington

Duncan, King of Scotland Dawn Day
Macduff Kate Parry - Jones

Macduff's Son Minnie Major
Fleance Dawn Day

Doctor .. Phoebe Reece
Messenger Kate Parry - Jones
Seyton Felicity Lightfoot
1st Murderer Felicity Lightfoot
Malcolm Felicity Lightfoot
Gentlewoman Felicity Lightfoot
2nd Murderer Dawn Day

Our Crew

Lighting Adrian Barren
Sound Effects Tom Barren
Lighting Assistant Alan Barren
Props Tim Barren
Stage Manager Henry Barren
Wardrobe Melanic & Susan Barren
Make-up Carol Barren
Set Construction George & Henry Barren
Crew Members of the Barren family
Front-of-House Manageress Phoebe Reece

Box Office Slowcome & Smiles Funeral Directors, High St. Farndale

Farndale Avenue Housing Estate Townswomen's Guild Dramatic Society

We would like to welcome you all here tonight to watch our entry for the National Association of Townswomen's Guild's Dramatic Society's Annual Regional Drama competition, and are very pleased to have Mr. Pineapple as our adjudicator. I have been closely involved with this production during its nine months development and am very much looking forward to seeing the fruits of our labours. I know that David Plummer, our talented director, feels that nine months at only two rehearsals a week is not a long enough period to truly develop the complex characters that Shaw intended, but I'm sure everything will be alright on the night - as they say.

Mr. Pineapple (our adjudicator) is very, very well known in London - having done several things for Aunty Beeb, these include a semi-operatic version of Pope's "The Dunciad" (sung in Polynesian), a dramatization of Sir Robert Walpole's letters to his wigmaker, which ran to an exhilarating fifteen episodes and most recently a major new musical based on the long-running disagreements between Einstein and Heisenberg on the relative merits of Quantum Mechanics and Relativity. He is also planning a twenty-six part documentary on the private life of woodlice which promises to be fascinating - if a little rude for my husband and me !

Coming back to tonight's play - it is of course that old staple of Amateur Dramatic Societies - Macbeth - Whatever would we do without George Bernard Shaw I ask myself. For those of you who aren't familiar with the play - I'd better explain that it's set in Denmark, quite a long time ago, and is all to do with people grasping nettles (metaphorically speaking) at the right time and not putting things off because if you do that people go mad and get ship-wrecked and fairies come along and turn you into a donkey.

Well do, please, enjoy the show - and if you would like to join our little society - we're always on the look out for new talent.

Slowcome & Smiles Funeral Directors
"Always Ready and Waiting"
27 High Street, Farndale : Drop in and see us

Macbeth - as you've never seen it before !

This play is a first for the Frayed Knot Theatre Company in several respects.

The Farndale Avenue Housing Estate Townswomen's Guild Drama Group's Production of Macbeth - A Comedy is the first "play within a play" that we have produced.

After six years of putting on comedies, this is the first time that we are staging a full-length "coarse acting" style play. although we did a one-act production, *Moby Dick* by Michael Green, in 1993. Macbeth features the largest back-stage crew we have ever assembled, topping our 1994 *Bliethe Spirit* by four. I have been impressed with the skill and enthusiasm shown by them all.

This play also marks my debut as a director. After years of being told what to do on stage, I felt it was time for me to boss a few people around instead.

The large majority of plays are dominated by male characters. Tonight's play gives the Frayed Knot ladies a chance to shine; I think this in itself will add a freshness and vitality to our production.

Rehearsing this play was great fun, but none of it is worthwhile without you, our audience. On behalf of Frayed Knot, thank-you for coming along tonight. Enjoy the evening; we hope you leave with a smile on your face.

If you would like to receive regular information about our forthcoming productions, please write your name and address on the clipboard you will find on the Farndale Townswomen's Guild table located in front and to the left of the stage.

In the meantime, let the Farndale Avenue Guild whisk you away into their carefully planned evening's entertainment. Hold on to your seat belts - it's going to be a bumpy ride !

Colin Bryer, Director.

Frayed Knot Theatre Company would like to thank Arthur Hyatt Studios for generously taking cast photographs which appear in this programme.

(excluding C. Bryer & R. Dobb's photographs)

We would also like to thank our sponsors, Matthew Homes Limited.

Frayed Knot Theatre Company

Why not join us ?

We're on the look out for

Actors

Actresses

Those technically minded

Back-stage crew

A warm welcome awaits anybody who fancies getting involved

We have lots of interesting ideas for the future, but would like more members

Previous experience in Theatre is not required

Why not give one of us a ring

Membership is only #5.00 a year

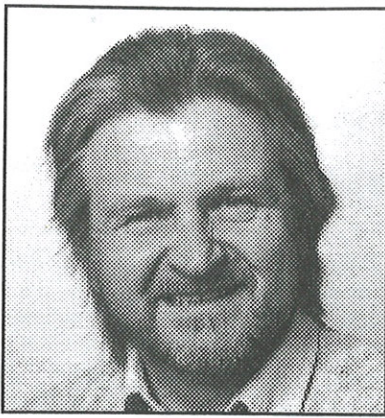
Here are a few phone numbers

Rob & Jackie Farrow (01442) 824318 {Home} (01707) 655550 {Work}

Colin Bryer (01296) 668033 {Home} (01525) 370013 {Work}

Graham Double (01442) 825422 {Work}

Regina Dobbs (01442) 826324 {Home}



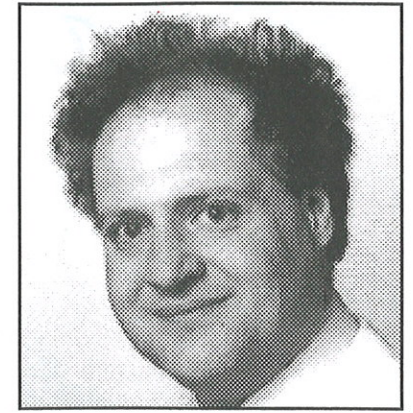
Ken Hayes - George Peach



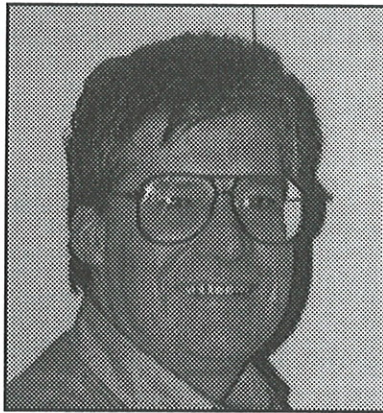
Jenny Booth - Mrs. Reece



Vi Malcolm - Minnie



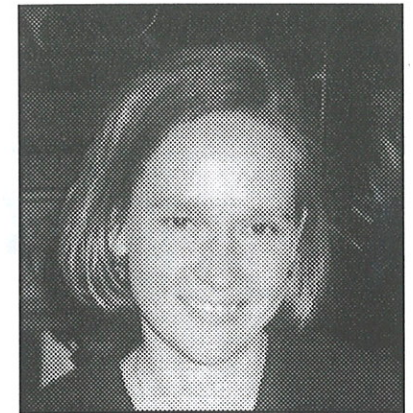
Rob Farrow - Plummer



Colin Bryer - Director



Jan Jones - Dawn



Regina Dobbs - Felicity



Jacquie Hildreth - Thelma



Mike Sane - Henry



Lynda Hunt - Kate



Julie Stanley - Gwynneth

*The Arthur Hyatt
Studio*



*The
Family Photographers*

74 High Street, Tring, Herts.
Telephone: 01442 824747